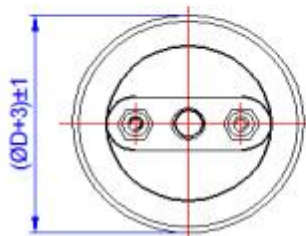
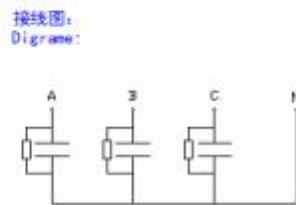
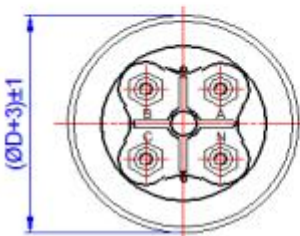
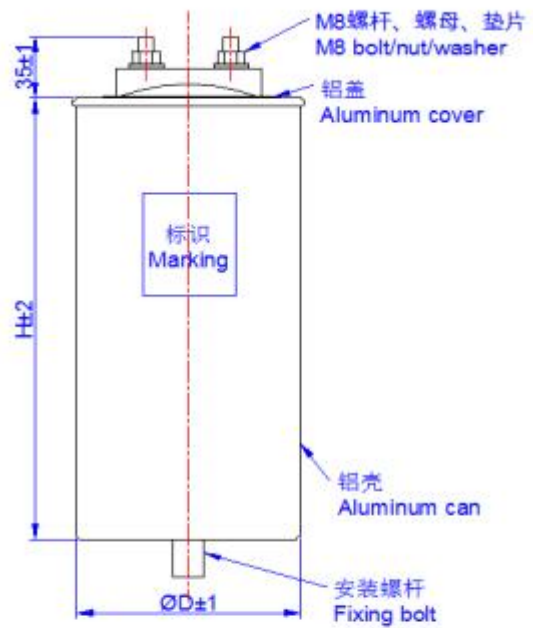
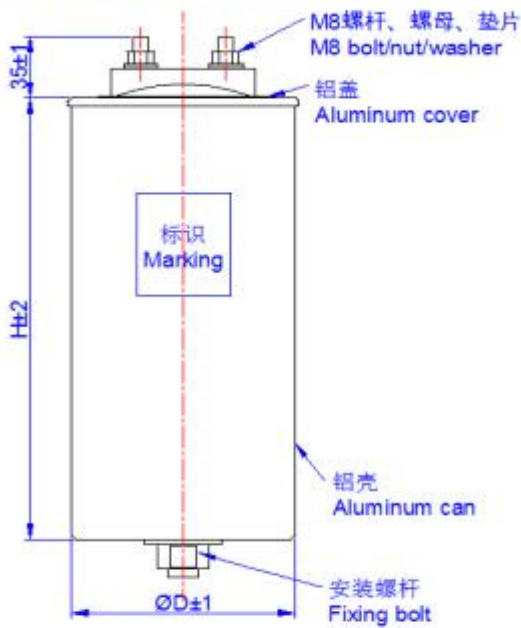


Specifications

Reference Standard	IEC 60831, optional IEC 61071
Climatic Category	40/85/56
Operating Temperature	-25 55
Storage Temperature	-40 85
Voltage Range	230Vac 525Vac, can up to 2000Vac
Capacitance Range	See attached
Capacitance Tolerance	±5%;±10%
Test Voltage Between T-T	2.15U _n (10s,20±5)
Test Voltage Between T-C	Un+1KVac which is higher (10s,20±5)
T ₀	1 (20±5)
Max. Permitted Voltage	<p>1.1 U_n (30% of on-load duration)</p> <p>1.15U_n (30min per day)</p> <p>1.2 U_n (5min per day)</p> <p>1.3U_n (1min per day)</p> <p>1.5U_n (30ms every time, 1000times during the lifetime)</p>
Max. Permitted Current	1.3I _n
Max. Altitude during	2000m

operation	
Max. Torque of terminals	M6:5Nm; M8:6Nm; M10:8Nm
Max. Torque of installation	M12:10Nm; M16:12Nm

◆ Y connection with N and single phase



Type	Voltage (V)	50 Hz		60 Hz		Capacitance (µF)	Dimension (mm)
		Output (kVar)	Current (A)	Output (kVar)	Current (A)		
Rated Voltage 250VAC, 50/60Hz							
BCMJ0.25-5-3YN	2	5	20	6	24	25	106*110

	5 0					4. 8	
BCMJO.25-10-3YN	2 5 0	1 0	40	1 2	48	50 9. 6	106*150
BCMJO.25-15-3YN	2 5 0	1 5	60	1 8	72	76 4. 3	106*235
BCMJO.25-20-3YN	2 5 0	2 0	80	2 4	96	10 19. 1	106*280
BCMJO.25-25-3YN	2 5 0	2 5	10 0	3 0	120	12 73. 9	116*280
BCMJO.25-30-3YN	2 5 0	3 0	12 0	3 6	144	15 28. 7	126*280
Rated Voltage 280VAC, 50/60Hz							
BCMJO.28-5-3YN	2 8 0	5	17. 9	6	21. 5	20 3. 1	106*125
BCMJO.28-10-3YN	2 8 0	1 0	35. 7	1 2	42. 8	40 6. 2	116*150
BCMJO.28-15-3YN	2 8 0	1 5	53. 6	1 8	60. 8	60 9. 3	106*235
BCMJO.28-20-3YN	2 8 0	2 0	71. 4	2 4	85. 6	81 2. 4	116*280
BCMJO.28-25-3YN	2 8 0	2 5	89. 3	3 0	107. 2	10 15. 5	126*280
BCMJO.28-30-3YN	2 8 0	3 0	10 7.1	3 6	128. 5	12 18. 6	136*280